



iConx2 V2

For Sage PFW

By Dynamic Business Solutions, Inc.

iConx2 brings the power of ACT! to Sage PFW users. *iConx2* combined with ACT! fills the information void between your sales team and your internal accounting system for a true CRM product. ACT! is designed to manage your prospects and Sage PFW is designed to manage your customers. Together, your sales team can keep on top of your customers as well as their prospects, and your internal customer service team can harness all the information gathered in the sales cycle directly into Sage PFW.

Product Highlights

System Manager:

- Assign individual users rights for some or all of the transfer functions
- All transfers and changes are logged for quick reference
- Full ACT! security integration

Transfer of Customers to ACT!

- Customers can be transferred to ACT! either individually, by customer class, by customer name, by sales rep or by territory
- The transfer process populates the Company information and contact information if available
- Identifies customers that are missing from ACT!

Transfer of Contacts or Companies from ACT! to Sage PFW

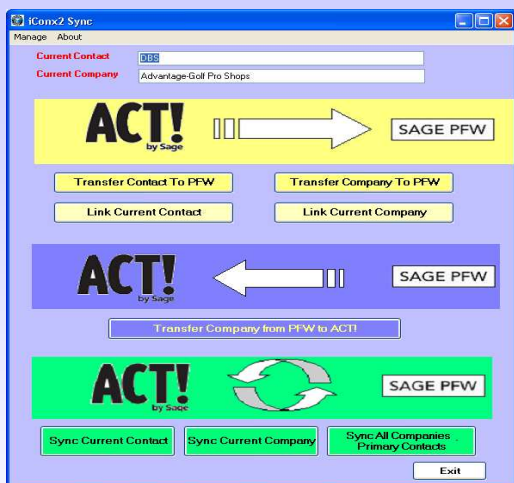
- Depending on how you are using ACT!, *iConx2* allows the transfer of either the contact information or the company information directly into Sage PFW.
- No Re-keying • No typos • No worries

Keep ACT! and Sage PFW synchronized

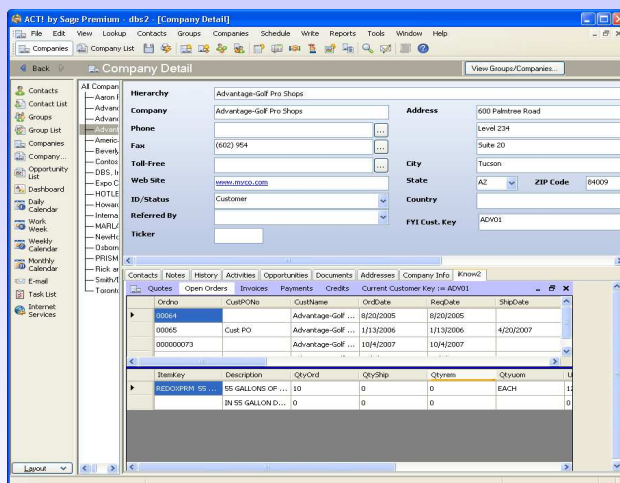
- Integral to *iConx2* is the synchronization engine which ensures that the data in both Sage PFW and ACT! are the same
- Contacts can be marked to remain independent or to be synchronized with Sage PFW – perfect for companies with multiple departments

CRM within ACT!

- Win *iConx2* Version 2, true CRM is now integrated within ACT!
- View:
 - Orders and their line items
 - Quotes and their line items
 - Invoices (current and historical)
 - Credit Memos
 - Payments



Control menu launched from within ACT!



Live Order/Invoice data.



Dynamic Business Solutions
1035 Hinesburg Road
South Burlington, VT 05403
802.383.1600
www.D-B-S.com



iConx2

For Sage PFW

By Dynamic Business Solutions, Inc.

Annual Maintenance & Support Plan (Required)

19% of System List Price

Includes updates to agree with Sage Software current versions,
and 3 Support calls (thereafter \$75/call*)

* Subject to change

System Requirements

- Memory: ACT! requires 512 (1024+ recommended)
- OS: Windows XP Pro, 2000 Pro, 2000 server (all versions), 2003 server (all versions). Pervasive client must be installed on the workstation/server.
- High-speed Internet Access
- ACT! 2011
- .NET 2.0 Framework SP1

About Dynamic Business Solutions

Established in 1995, Dynamic Business Solutions develops, supports and markets industry specific applications that integrate to leading packages such as Sage Software's Sage PFW, Sage Abra and ACT!. DBS products are used in manufacturing, hospitality and non-profit organizations.

An authorized reseller for Sage Software, DBS and its developers and experienced professionals are dedicated to developing client focused solutions.



Dynamic Business Solutions

**1035 Hinesburg Road
South Burlington, VT 05403
802.383.1600
www.D-B-S.com**