



# Dynamic Business Solutions

Improving business life through technology.

May 2007

## Dynamic Business Solutions to Present at Sage Insights

Dynamic Business Solutions will be exhibiting and presenting at the 2007 Sage Insights Trade Show May 14-17, 2007, which will be held at the Gaylord Palms Resort in Orlando Florida.

The Insights Trade Show is the ideal opportunity for us to garner the knowledge and expertise for which you rely on us, while providing us with the opportunity to show off some of the custom products we've written and developed over the last few years to Sage VARs from all over the country.

It's also a great opportunity for us to see what's ahead for Sage PFW, Sage ACT! and Sage Abra, so we can better inform you of new features and functionality.

DBS will be among the presenters at the Sage PFW—Extend Your Reach sessions, where we will give a PowerPoint presentation which will highlight our iConx2 Sage PFW—Sage ACT! integration. We're really excited to have the opportunity to show the products you've helped us develop.

Be sure to look for a recap of our trip in the next newsletter!



### Inside this issue:

[DBS to Present at Sage Insights](#) 1

[DBS Summer Hours](#) 1

[Sage PFW Additional Module Promotion](#) 2

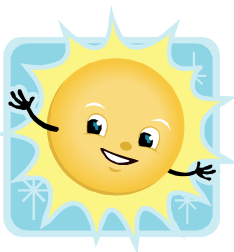
[Sage PFW Webcasts](#) 2

[New MS Dynamics GP HR and Payroll Functionality](#) 3

[End of Support for MS Dynamics GP 8.0](#) 4

[Tip of the Month](#) 4

## Dynamic Business Solutions—Summer Business Hours



Dynamic Business Solutions will be observing Summer Business Hours from May 28th through September 3rd. During this time, our office hours will be Tuesday—Friday, 8:30am to 5pm.



## Special Offer on Additional Sage PFW Modules!

Don't miss this opportunity to add new functionality to your Sage PFW system and save! Purchase one of these modules and save 10%. Buy two or more and save 15%!\*

Accounts Payable • Accounts Receivable • Bank Book • Multi-Currency Manager • General Ledger • Premier Ledger

Premier Budgeting • Premier Consolidations • Premier Inter-Company • Premier Translation • AuditMaster • Inventory

Purchase Order • StarShip • Sales Order • Project Costing • FRx Report Manager • FRx Report Launcher • FRx Report Server

FRx Report Designer • FRx Drill Down Viewer • FRx Web Port • Formulas • Costing • Labeling • Laboratory • MRP • MSDS • Production

This offer ends on June 28, 2007. For more information, please e-mail [Sales@d-b-s.com](mailto:Sales@d-b-s.com), or call 802-383-1600.

\*Must have a current ClientCare Plan in order to take advantage of this offer.

## Upcoming Sage Webcasts

### Sage PFW—Packed With Power—Accelerate Your Success with Version 5.5!

Take advantage of this opportunity to explore many new features of Sage PFW 5.5! Whether you're a new user of the Sage PFW family of products or a long-time expert, this FREE webcast will introduce you to new tools that will save you time, improve your workflow, and eliminate unnecessary processes.

June 13, 2007—12:00pm Eastern Standard Time

### Sage PFW—Starship: Faster, Easier Shipping!

Mailed. Shipped. However you say it, StarShip shipping software gets it done faster and easier. Simply enter an order number and StarShip receives the ship-to information from Sage PFW. Then you use StarShip to manage your entire shipment, including rate shopping to ensure you get the best price. StarShip will write the freight details and other vital details back to Sage PFW. No more wasted time reentering data, and risking costly errors! That means faster, more accurate billing!

May 23, 2007— 12:00pm Eastern Standard Time

### Sage PFW—The Ultimate Choices for your Business—Get to Know our Modules

Join Sage Software for this 60 minute webcast to receive details on all of the modules for your Sage PFW system and get answers to your questions live. There is no better time than now to add additional modules to your Sage PFW system and further automate areas of your business.

Sage PFW Financial Modules— June 6, 2007— 12:00pm Eastern Standard Time

Sage PFW Process Manufacturing Modules— May 9, 2007— 12:00pm Eastern Standard Time

To sign up for one or more of these webcasts, go to <http://www.d-b-s.com/prodsol/accounting.html>, and click on this icon:





## Announcing - New Human Resources and Payroll functionality for Microsoft Dynamics GP

Microsoft Business Solutions has announced the availability of Payroll Extensions, Advanced Payroll, Advanced Human resources, PTO (Paid Time Off) Manager and Benefit Self Service modules for Microsoft Dynamics GP. These new modules will benefit companies that want to leverage powerful integration, routine task automation, and instant availability of employee data to help maximize efficiency, reduce costs, and make it easy to comply with government reporting requirements. These enhancements will be available in v10.0, which will be released in June 2007.

**Payroll Extensions** automate overtime rate management, integration of payroll to payables, and management for deductions in arrears.

**Advanced Payroll** provides pay policy management, employee hourly equivalent budgeting, payroll accrual management, and advanced reporting functionality for Payroll in Microsoft Dynamics GP. This module is ideal for customers who:

- Have hourly workers earning multiple pay rates due to working in different departments, positions and shifts.
- Need to calculate and post payroll accrual and reversing entries.
- Need to budget and forecast based on payroll hours, rather than dollar amounts.

**PTO Manager** automatically calculates vacation and sick time during the payroll process. The updated vacation and sick data is posted to the employee's records when the checks are posted. This module is a good fit for organizations who:

- Have employees who accrue time each pay period and can have pro-rated accruals based on actual hours worked.
- Need multiple accrual schedules for vacation and sick time.
- Want to ensure that paid time off plans are administered, recorded and reported properly.
- Require detailed and ad hoc employee reports.

**Advanced Human Resources** provides additional tracking and reporting capabilities for Human Resources in MS Dynamics GP. This module was designed for companies that:

- Track employee certifications, licenses and training data.
- Need to track data related to employee health and wellness.
- Need to create future effective dates for benefits and deductions.

**Benefit Self Service** and HRM Self Service Suite provide employees with online access to benefit information and the open enrollment process. This feature is perfect for MS Dynamics GP users who want to deploy online benefit enrollments to employees and conduct open enrollment through Business Portal.

If you would like more information about these exciting enhancements, or for pricing, please contact [Sales@d-b-s.com](mailto:Sales@d-b-s.com), or call 802-383-1600.



1035 Hinesburg Road  
South Burlington, VT  
05403

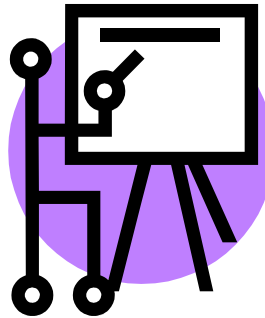
Phone: 802-383-1600  
Fax: 802-383-1601  
Email: Sales@d-b-s.com

*Improving business life through technology.*



## Staff In-Service Training

We're planning in advance! Dynamic Business Solutions' staff will be involved in day-long training sessions, keeping current on hardware and software, on the following dates:



- **May 18, 2007**
- **June 15, 2007**
- **July 20, 2007**
- **August 17, 2007**

Please note that some of these meetings will be off-site and we will be available for emergencies only on a limited basis. If you need software support, here are some helpful tech-support numbers.

- |                                       |              |
|---------------------------------------|--------------|
| • <b>Sage Abra</b>                    | 800-424-9392 |
| • <b>Microsoft Business Solutions</b> | 800-456-0025 |
| • <b>Sage PFW</b>                     | 800-333-5524 |

### REMINDER: Support for MS Dynamics GP 8.0 and 8.0 Standard Ends October 9, 2007



Microsoft Business Solutions will end support for Microsoft Great Plains 8.0 and Microsoft Dynamics Great Plains 8.0 Standard on Oct. 9, 2007. Customers who are currently using payroll need to upgrade to a newer version of Microsoft Dynamics GP to receive support tax and regulatory updates as the updates for Microsoft Great Plains 8.0 will end October 9, 2007.

## Tip of the Month

### From Dynamic Business Solutions

#### Skip Through Worksheets With a Shortcut

When you're working in multiple applications at once, you can use Alt + Tab to move between programs, however, this doesn't work when you're moving between worksheets in the same workbook.

- To move one worksheet to the right:  
Press CTRL + PAGE DOWN
- To move one worksheet to the left:  
Press CTRL + PAGE UP

